

Quick Start Guide

V2.1

- * Voor quickstart handleidingen in andere talen verwijzen wij u naar onze CD.
- * Veuillez consulter le CD pour des guides de démarrage dans d'autres langues.
- * Auf der CD finden Sie Kurzanleitungen in anderen Sprachen.
- * Il CD contiene una guida introduttiva in diverse lingue.
- * Por favor, consulta el CD para visualizar la guía de inicio rápido en otros idiomas.
- * Consulte o CD para ver os guias de "Iniciação Rápida" noutros idiomas.

* For detailed instructions on how to use the Digital Pen, see the User Manual stored on the CD.

Step by Step Guide to Get Started

Step1 Charge the Battery

For initial use, your base unit needs to be charged for about 3 hours.

Connect your base unit to your PC using the USB cable for charging.



Step2 Installing Pen Batteries

- a. Remove the battery compartment cover.
- b. Install two SR41 batteries, with the positive poles facing up as shown (Use the enclosed SR41 batteries).
- c. Replace battery compartment cover.



WARNING:

Do not attempt to open the pen. This may cause the pen to malfunction.



Step3 Installing Ink Refill

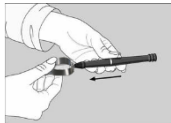
To insert a new refill,

1. Slide the new refill into the tip of the pen.
2. Gently press the new refill until it is lodged securely in place.



To replace the ink refill,

1. Detach the cap from the digital pen.
2. Clamp the ink refill with the refill extractor. Hold the pen firmly, and apply pressure with the extractor against it.
3. Pull the used refill out.



Step4 Turn On the Base Unit

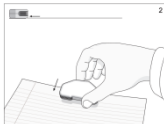
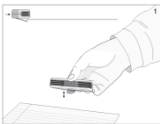
Press and hold the **Power** button on the base unit.

Step5 Clip your Base unit on a Paper

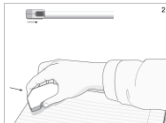
Your base unit can be mounted in 3 positions on top of the paper.

The following images illustrate the way you can mount your base unit, according to the recommended positioning.

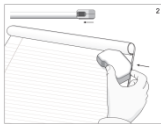
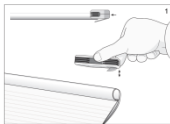
- A. Mounting your base unit at the **top center** of the paper is recommended for a **single paper** usage:



- B. Mounting your base unit at the **top left corner** of a paper block is recommended for **right hand Users**.



- C. Mounting your base unit at the **top right corner** of a **paper block** is recommended for **left hand Users**.



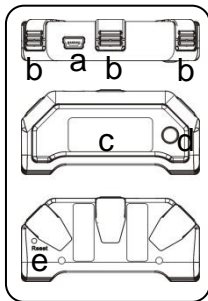
Step6 Start writing

When you pick up the pen, find a position that is comfortable for you. Be careful to hold the pen in a way that does not block the signals sent from the tip of the pen to the memory unit receivers. When you are writing with the pen, make sure its inclination to the paper surface is between 45° and 90°. Hold the pen firmly and write normally.



Note: Make sure the pen point is 1.5cm away from the unit. Otherwise, the unit sensor may not work.








Buttons & Ports



- USB port** – connect to computer through the USB cable
- Paper Clipper** – clip the unit to paper
- LCD display**
- Power button** – Press and hold for about 5 seconds to turn on the unit. Press shortly to create a new note.
- Reset hole** – When the unit does not respond, stab into this hole to reset it and

Memory Unit LCD

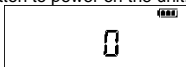
Use the LCD to view status indications.

	Name	On when	Off When	Blinks When
	The Digital Pen is Connected	Unit is connected to PC	Unit is NOT connected to PC	Data is uploaded to PC
	Memory FULL	The base unit memory is 90% full. It is highly recommended to upload your files to your PC and delete them from memory!	Less than 90% capacity used	Never
	Pen Low Battery	Low Pen battery	Pen Battery good	Low Pen battery
	Base unit Low battery	Full	Unit is Off	Charging
	Note Mode	Pen down/Pen move	Mouse Mode	Pen down/Pen move
	Mouse Mode	Pen down/Pen move	Pen Mode	Pen down/Pen move
	Number of saved notes in memory	Always	Unit is Off	Memory full Or Error

Create Note in Mobile Mode

To take handwritten note when you are away from computer,

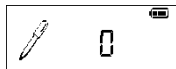
(1) Press and hold the ON/OFF button to power on the unit.



(2) Hold the base unit and gently press the paper clipper.

(3) Slide the base unit into the paper's upper edge and make sure the base unit is in the center.

(4) Pick up the pen and start writing. (NOTE: Be careful to hold the pen in a way that does not block signals sent from the tip of the pen to the receiver unit.)



(5) Once you've completed one page, shortly press the ON/OFF button to save current

page and start a new page. On the base unit screen, you can see the page number added by one.


- (6) All notes are stored in the base unit. You can upload them to a PC for viewing, editing, or email.

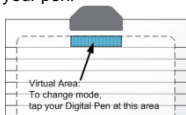
Use your Digital Pen as a Mouse

The device can behave as a mouse, performing the click and hovering function.

Make sure you have connected the base unit to your PC before using the Mouse function

Changing to Mouse mode can be done in 3 ways:

- Start your Note Manager application > right click the application tray icon  > select "Mouse Mode".
- Press the top button (ON/OFF button) on the base unit.
- Click the virtual area using your pen.



In Mouse mode, your Digital Pen behaves as a mouse, having the following functionality:

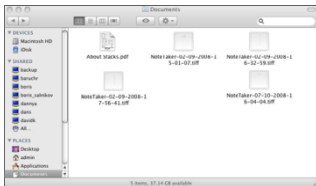
- To move your mouse cursor you can hover with the pen. To start **Hovering** you can press the side button or tip the pen on the paper. The pen will now hover even with no press for about 30 seconds.
- To **Click** an object, point your mouse cursor on that object. Now tip the pen on the paper or click the side button.
- To **Double-Click** an object, point your mouse cursor on that object. Now tip the pen twice on the paper or click the side button twice.
- To **Right-Click** an object, point your mouse cursor on that object. Now press the tip of the pen a bit longer on the paper. A special 'Right Click' cursor will appear. Lift the pen from the paper, and the context menu (Right Click menu) appears.



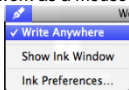
Using the Digital Pen on a MAC in connected mode

Digital Pen operation with Mac

- (1) Use the Digital Pen to capture and save your notes while you are away from your Mac, in meetings or lectures.
- (2) Connect the Digital Pen to your Mac to upload the saved notes. The notes are saved in TIFF format in the directory that you have specified. Double click on the desired TIFF file in order to view the note.

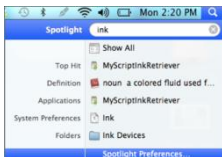


- (3) While being connected to the Mac via the USB port, the Digital Pen can be used as a Mouse and as a Tablet input device for Mac ink applications. To use the Digital Pen as a Tablet Input device, you first need to enable this mode by clicking the Ink icon at the top bar of the MAC desktop and then selecting "Write Anywhere". If you deselect "Write Anywhere", your Digital Pen will work as a mouse only.

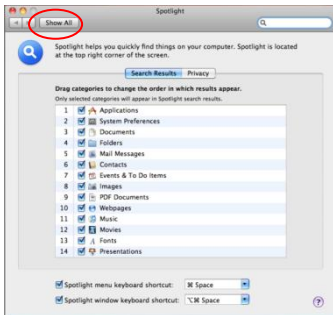


Note: If the ink icon  cannot be seen, you can display it in the following way:

- Connect the device to MAC.
- On the top-right bar, click  and then input "ink".



- Select "Spotlight Preference", and then choose "Show All".



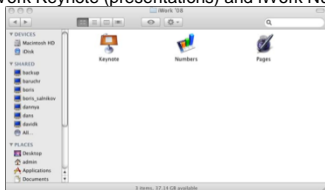
d. Click "Ink".



e. Set "Handwriting recognition" as "On" and select "Show ink in menu bar". The ink icon should appear on the toolbar.



- (4) Use the digital pen in applications such as iWork'08. You can write handwritten letters on-line, and the Mac will convert it into text. The feature is available for iWork Pages (word processor), iWork Keynote (presentations) and iWork Numbers (spreadsheets).



Note: The Digital Pen can be also used for drawings inside applications such as Adobe Illustrator, Photoshop, etc.

Using the Vision Objects MyScript® Notes

By default the pen transfers the notes you write in TIFF files to your Mac.

If you would like to make use of the included MyScript Notes software, in order to convert your notes into editable text; you need to transfer your notes off your pen via the MyScript InkRetriever application: this is installed automatically with the MyScript Studio Notes Editor program.

To use, open the MyScript InkRetriever application and:

- In the Retrieval settings tab:

- choose the folder where the ink files from your device will be stored:
click Browse to select the folder.
- Next, decide how the ink download should occur:
 - Choose whether you want to overwrite any files with the same name already in the folder.
 - Choose whether or not to keep the ink files on the device or to clear its memory after downloading.
- Choose whether MyScript should scan every USB device plugged in, to check whether it contains digital ink. It may be necessary to activate this option if you use a device that MyScript does not recognize immediately. Take care: when this option is active, all new USB devices will be scanned, which may take a long time for large-capacity devices!
- We recommend that you leave the Launch automatically on Windows startup option active, so the file watching process can happen without any intervention.
- Click OK to confirm.
- On the Pegasus settings tab:
 - give a file name prefix to help identify the ink files from this device.
 - It is important to specify where the device was clipped to the paper, as this determines the ink position.
 - Ink from this device must be downloaded manually. This dialog box will open every time you plug in the device. To bring the ink files onto your computer, click the Download ink button.
 - If you tick the Download without asking me option, the download will happen automatically each time without the dialog box appearing. If you choose an automatic download, make sure you use the same base unit orientation for any future notes!
 - Click OK when you are done.